

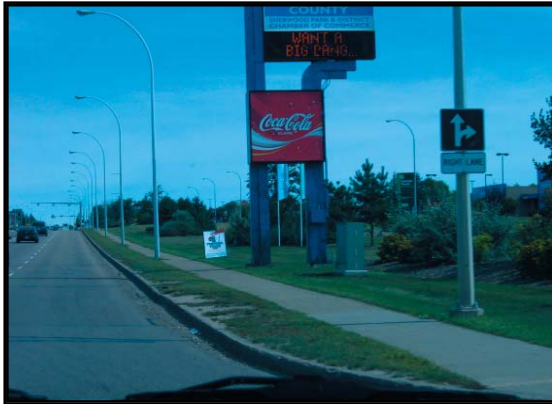
DESIGN GUIDELINES - PEDESTRIAN ENVIRONMENT

GUIDELINE 2.0

AVOID EXCESSIVELY LONG SEGMENTS OF STRAIGHT SIDEWALKS

EXISTING CONDITIONS/ CONSTRAINTS

The lack of texture along the Wye Road corridor creates a long and bleak appearance



OPPORTUNITIES

1. Pedestrian nodes should be added on the route to provide destination and social opportunities.
2. Small plazas and seating areas should be incorporated on the trail system to provide seating and rest areas.
3. Combine with roadside commercial to create outdoor dining areas and seating areas.
4. Create more curvaceous trail shape to make the walk more interesting.

Example of how multiple materials create textural interest



Example of how the repetition of various materials create a defined and desirable space



Example of how trees can canopy a space; creating visual interest with texture and contrast



DESIGN GUIDELINES - PEDESTRIAN ENVIRONMENT

GUIDELINE 2.1

INCORPORATE LIGHTING IN PEDESTRIAN WAY TO IMPROVE SECURITY AND FUNCTION

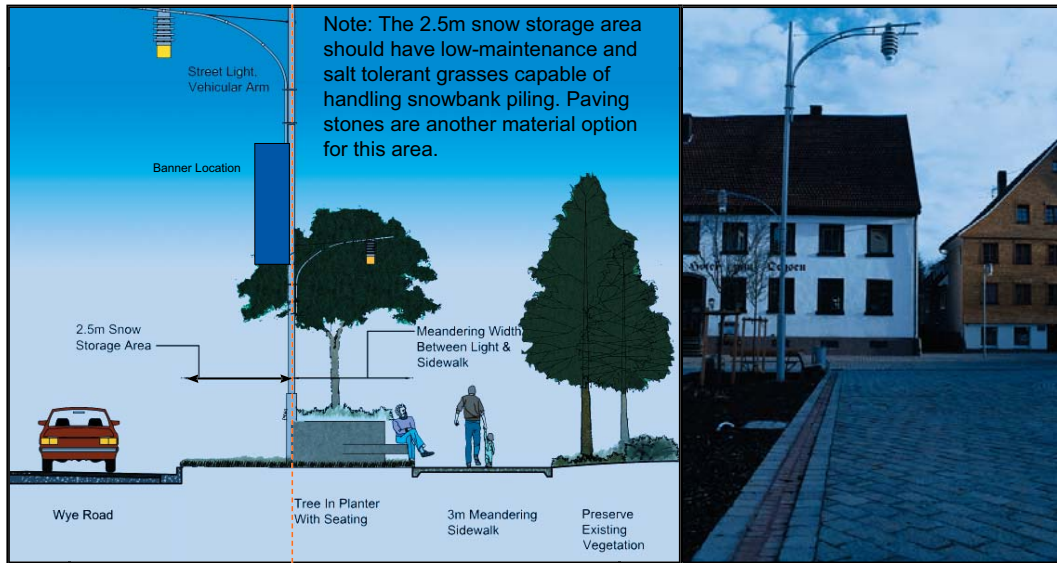
OPPORTUNITIES

Sample of using a street light which has two arms: one vehicular arm and one pedestrian arm. Pedestrian arm would be 3-4m high to provide enough illumination for pedestrian safety. Select and locate street lights in a manner which provides both night safety and aesthetic value.

- Provide enough light to promote pedestrian safety for night times.

- Bollard lights function well in a non-intrusive way to enhance pedestrian safety and visibility.

(Right) are three examples of how adequate lighting along streets and pedestrian areas promote safety, interest, and aesthetic quality



Wye Road Urban Design Guidelines

DESIGN GUIDELINES - PEDESTRIAN ENVIRONMENT

GUIDELINE 2.2

CREATE A LANDSCAPE BUFFER BETWEEN PEDESTRIANS AND VEHICLES

EXISTING CONDITIONS/ CONSTRAINTS

Between Ordze Road and Sherwood Drive, an existing sidewalk on the south side of Wye Road offers pedestrians little in the way of comfort or safety. The existing sidewalk is located directly adjacent to the roadway making it both dangerous and noisy. In the area where Ordze Road parallels Wye Road, an existing 16m wide greenway has the potential to offer a more pleasant pedestrian experience.

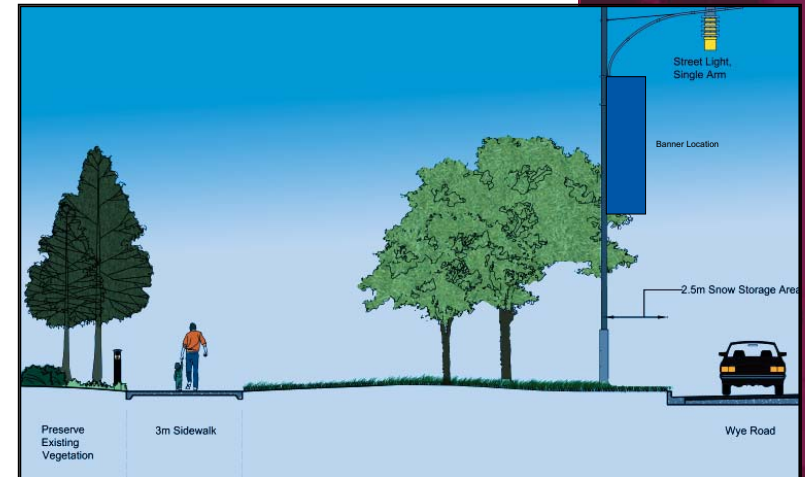
EXISTING: Unsafe, noise and unpleasant experience



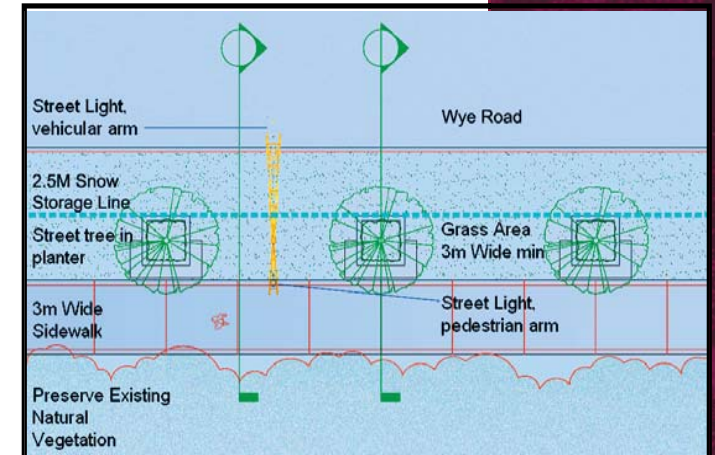
PROPOSED SOLUTION: Safe and pleasant experience



PROPOSED SOLUTION EXAMPLE 1: Example of vehicular and pedestrian separation



PROPOSED SOLUTION EXAMPLE 2: Trees may be planted in raised planters where Atco Pipeline provides depth limitations



DESIGN GUIDELINES - PEDESTRIAN ENVIRONMENT

GUIDELINE 2.3

PROVIDE A CONTINUOUS PEDESTRIAN RIGHT OF WAY
WHERE POSSIBLE



GATEWAY

ORDZE RD.
AREA

HISTORIC
MUSEUM
AREA

HAWTHORNE
STREET AREA
(TYPICAL
STREETScape)

NOTTINGHAM
WAY AREA

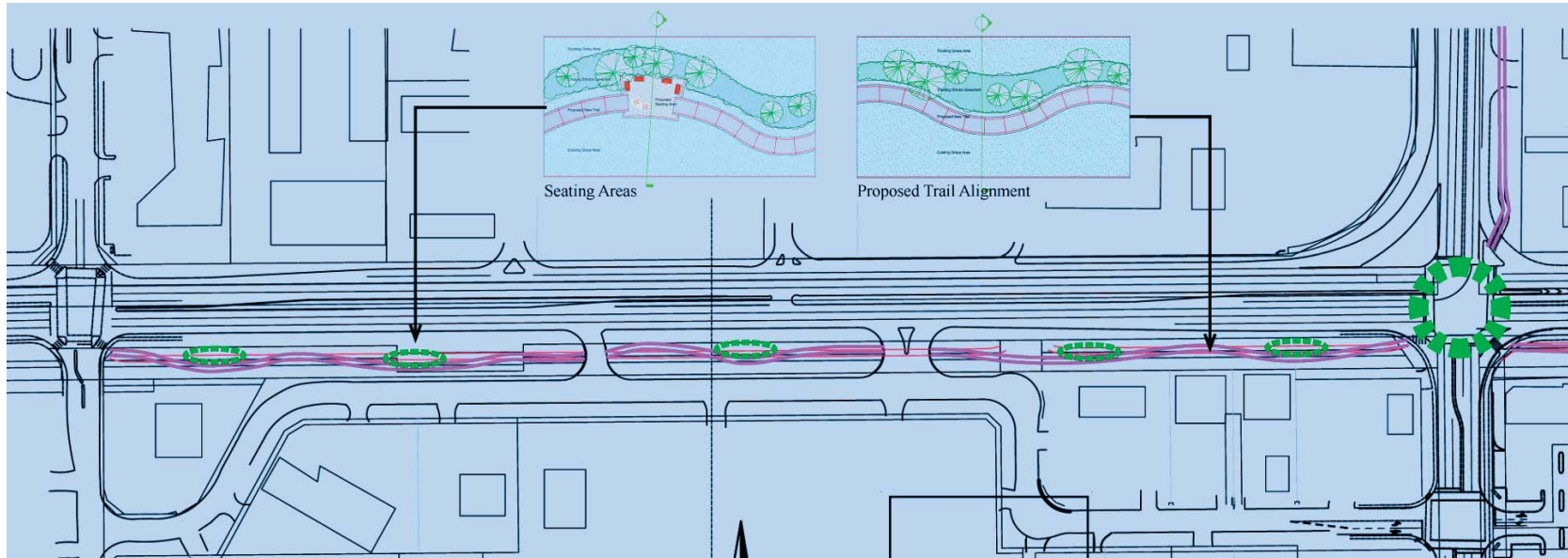
GATEWAY

THE FOLLOWING PAGES SHOW ENLARGEMENTS OF THE TRAIL SEGMENTS IN THE FOLLOWING ORDER:

- 1 Overall trail alignment and proposed seating areas
- 2 Trail alignment relating to major intersections and crosswalks
- 3 Relationship to road R.O.W.
- 4 Buffer areas

DESIGN GUIDELINES - PEDESTRIAN ENVIRONMENT

1 OVERALL TRAIL ALIGNMENT AND PROPOSED SEATING AREAS

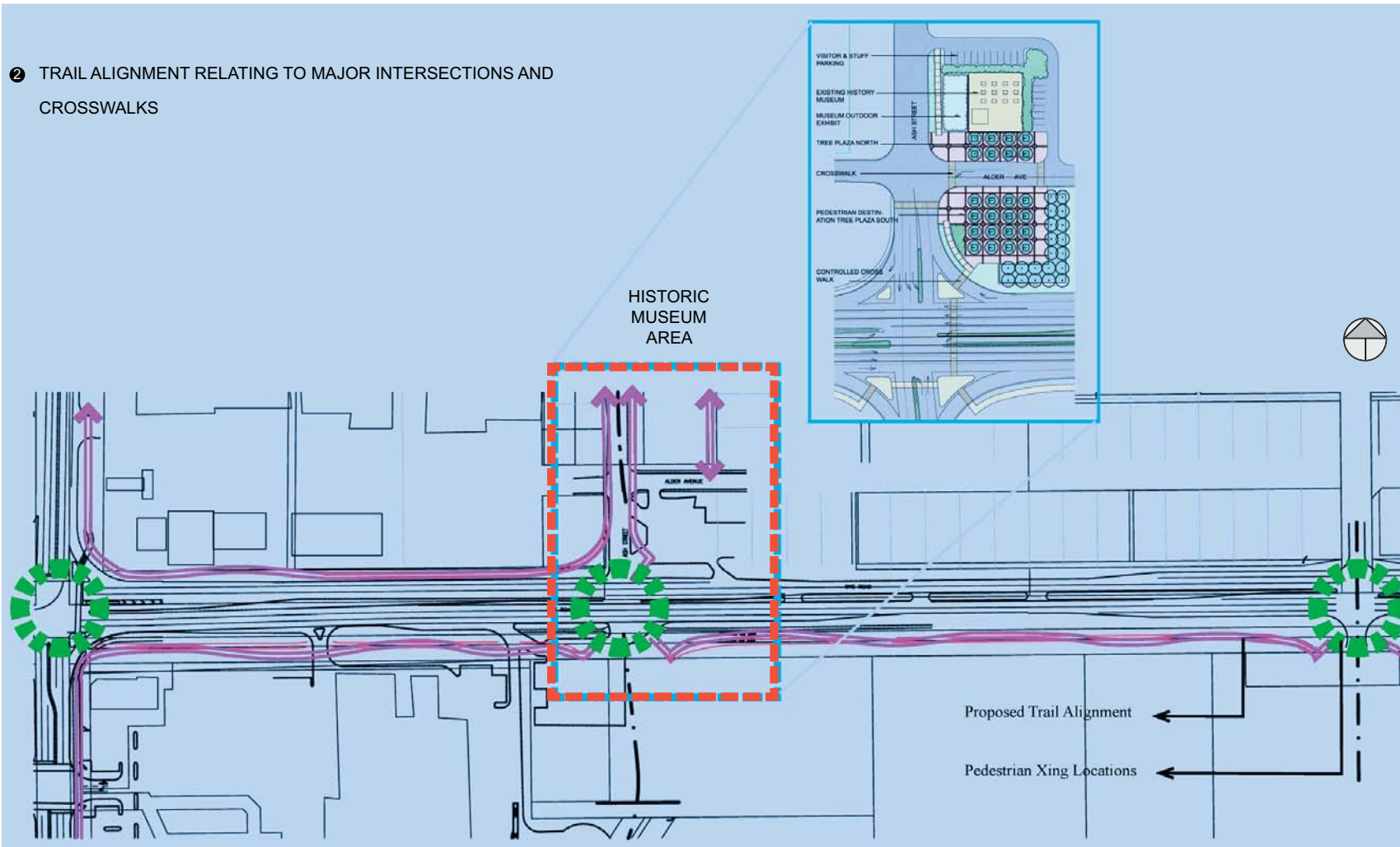


ORDZE RD.
AREA



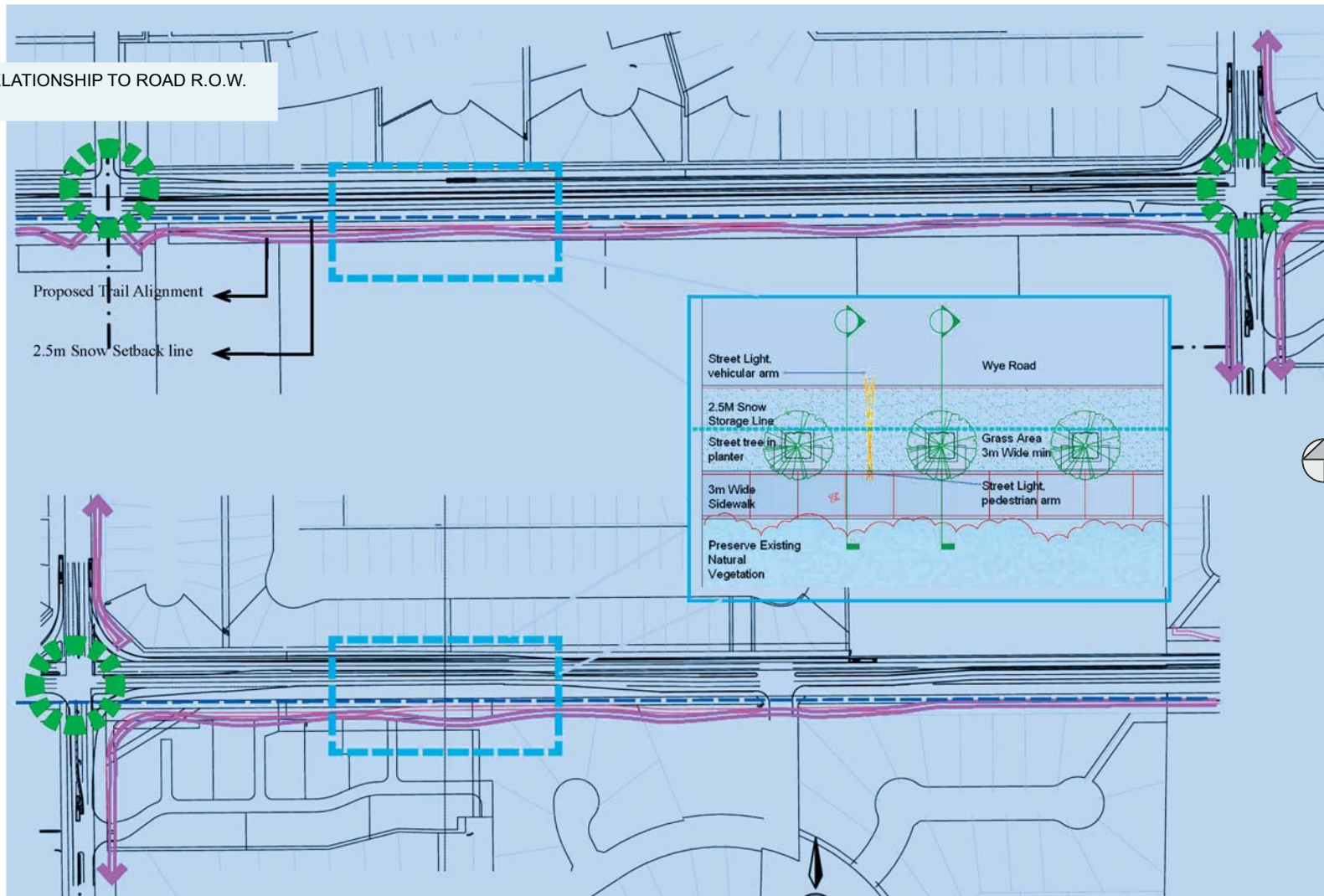
DESIGN GUIDELINES - PEDESTRIAN ENVIRONMENT

2 TRAIL ALIGNMENT RELATING TO MAJOR INTERSECTIONS AND CROSSWALKS



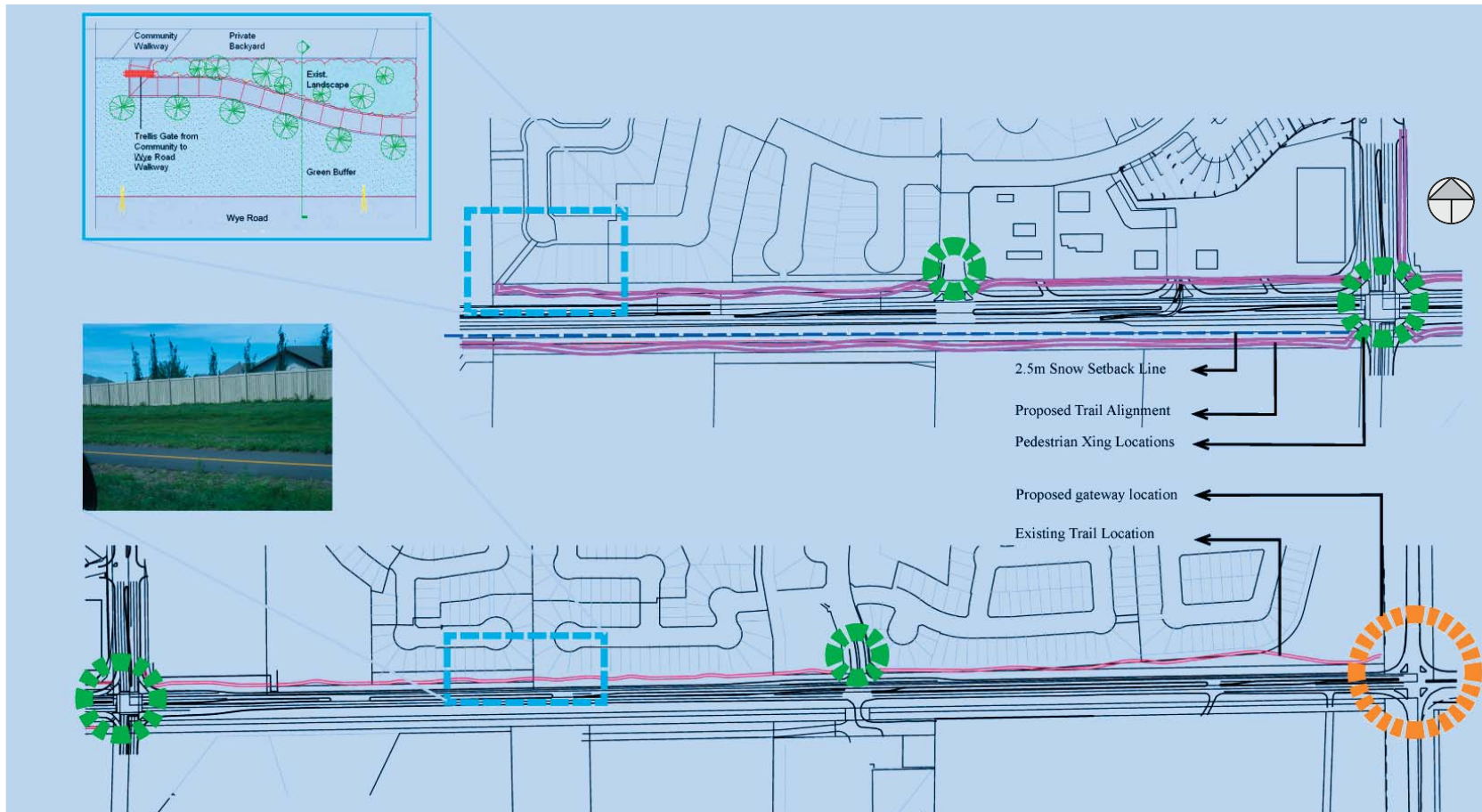
DESIGN GUIDELINES - PEDESTRIAN ENVIRONMENT

④ RELATIONSHIP TO ROAD R.O.W.



DESIGN GUIDELINES - PEDESTRIAN ENVIRONMENT

4 BUFFER AREAS



DESIGN GUIDELINES - PEDESTRIAN ENVIRONMENT

GUIDELINE 2.4:
ENHANCE THE VISIBILITY AND AESTHETIC QUALITY OF
PEDESTRIAN CROSSWALK

EXISTING CONDITIONS/ CONSTRAINTS
(Shown right) is a photograph that illustrates that the pedestrian sidewalks along Wye Road could use aesthetic upgrades and interactive features.

OPPORTUNITIES
Defined pedestrian crossing with special paving; controlled signs. The trail on the south side of Wye Road is the only access to the trail system. Therefore, crosswalks are essential and must be safe and visible with appropriate signage directing pedestrian traffic.

