

DESIGN GUIDELINES - PLACEMAKING AND COMMUNITY

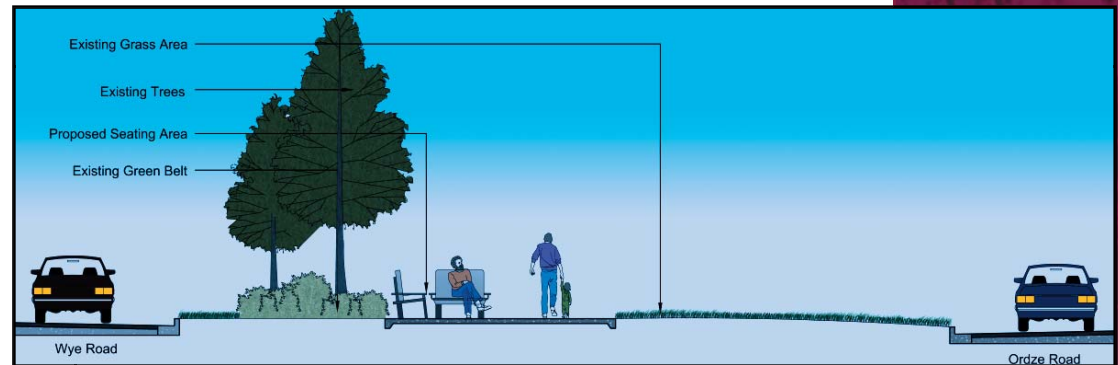
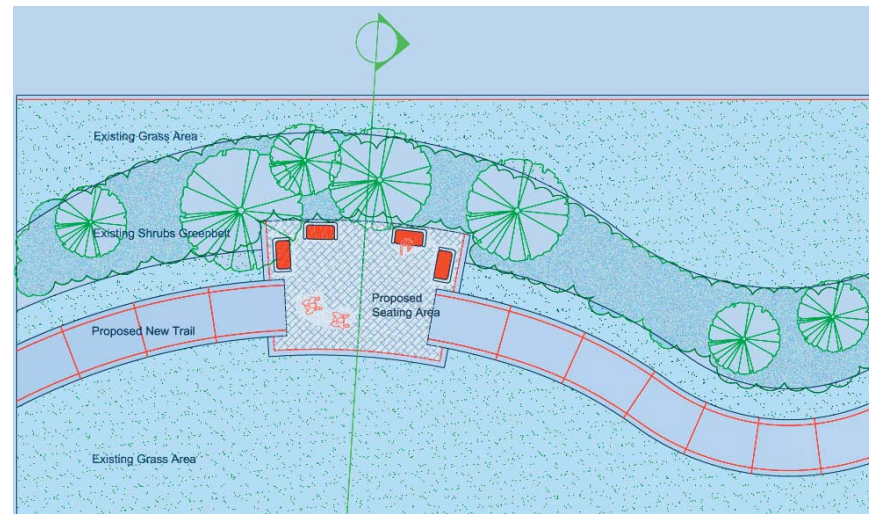
GUIDELINE 3.0 PROVIDE SEATING OPPORTUNITIES

Seating opportunities should be provided where appropriate. In some locations the sidewalk may be widened to create an opportunity for seating.

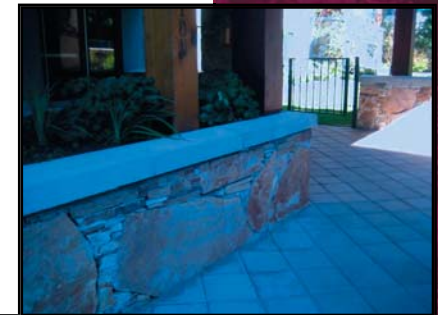
Seating would be suggested in:

- the museum area
- close to fast food
- trees of distinction and along the trail

Refer to next sheet for information about site furnishings that would aid the design with seating opportunities



(Right) are examples of how a variety of seating options can define spaces and create site variability



DESIGN GUIDELINES - PLACEMAKING AND COMMUNITY

GUIDELINE 3.1

USE SITE FURNITURE TO CREATE CHARACTER IN STREETScape

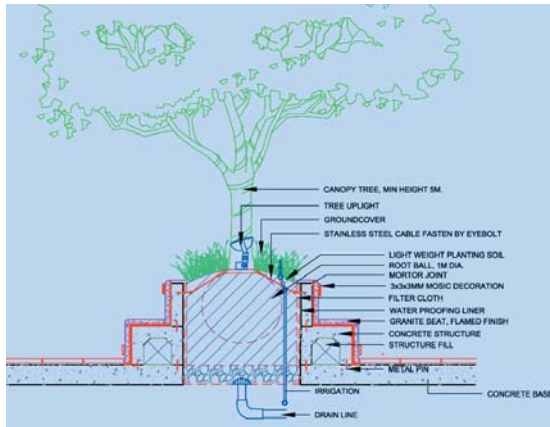
OPPORTUNITIES

Site furnishings such as benches, lighting, bus shelters, bike racks and trash receptacles should be used to offer comfort amenities to pedestrians. In addition, careful consideration of their design and color provide a tremendous opportunity for defining place and the enhancing attractiveness of each zone.

Design should create seating opportunities within each zone's specific and unique condition by using planter seating walls and plaza seating areas. Choose benches, trash cans and all other street furnishings to match street light poles in colour and character.

(Below/ Right) are examples of how changes in seating patterns can transition one space to the next in an open pedestrian environment.

The addition of site accessories such as canopies and garbage cans can also aid in pedestrian flows and the transition of spaces.



DESIGN GUIDELINES - PLACEMAKING AND COMMUNITY

GUIDELINE 3.2

CREATE A FOUR SEASON LANDSCAPE THAT IS LOW MAINTENANCE AND SUSTAINABLE

Careful consideration should be given to the selection of plant material to be used in the project area. Minimally, plant selection must consider the visual interest of any plant in all seasons of the year so that their natural beauty can be featured in four seasons.

Plants should also be selected on the basis of the ability to tolerate harsh conditions associated with road rights of way and budget limitations on maintenance funds.

Native species are highly recommended for use along Wye Road for higher survival rate, lower maintenance and sustainability.



Examples shown here illustrate how seasonal vegetation can create changing visual interest year-round

