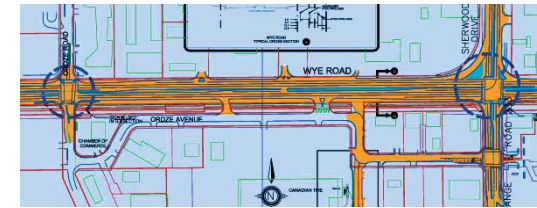


ZONE 1: WYE ROAD ORDZE AREA

STREETSCAPE

EXISTING CONDITIONS/ CONSTRAINTS

- Between Ordze Road and Sherwood Drive, an existing sidewalk on the south side of Wye Road offers pedestrians little in the way of comfort or safety. The existing sidewalk is located directly adjacent to the roadway making it both dangerous and noisy.
- Existing street signs are not organized.
- Straight sidewalk without any seating.

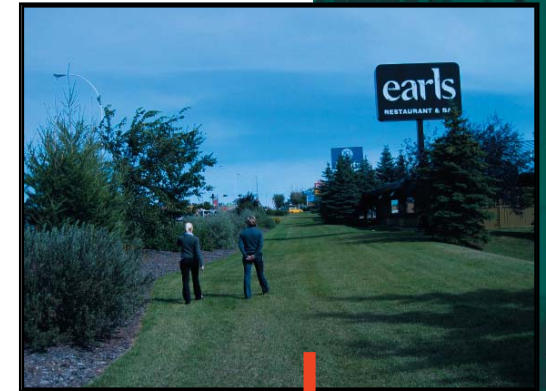


CONTEXT MAP

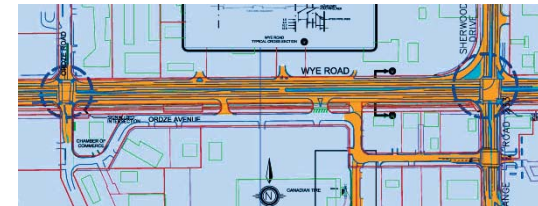
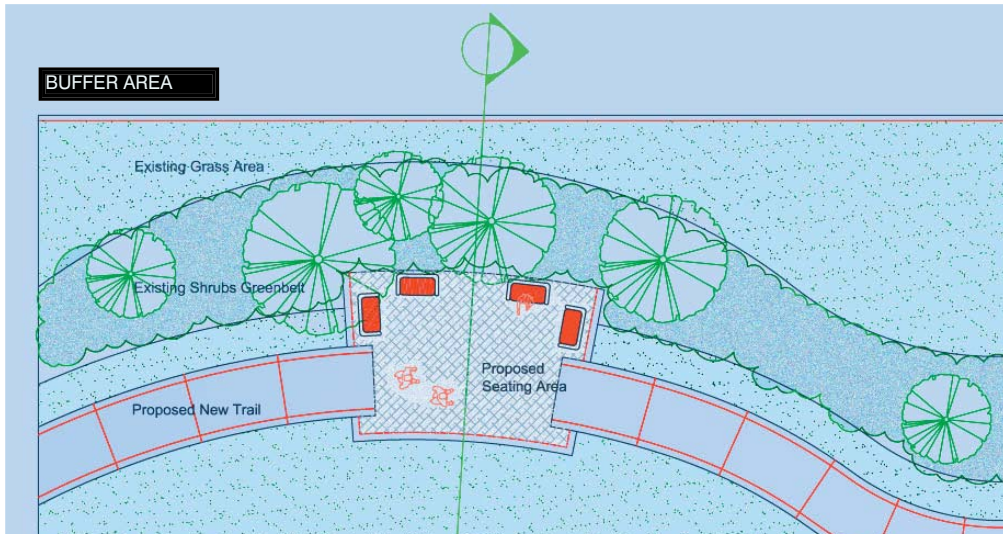
BUFFER AREA

OPPORTUNITIES (EXAMPLE 1)

In the area where Ordze Road parallels Wye Road, an existing 16m wide greenway has the potential to offer a more pleasant pedestrian experience.



ZONE 1: WYE ROAD ORDZE AREA



CONTEXT MAP

OPPORTUNITIES (EXAMPLE 4)
Shows that it is possible to provide opportunity for seating plazas where space is available.

